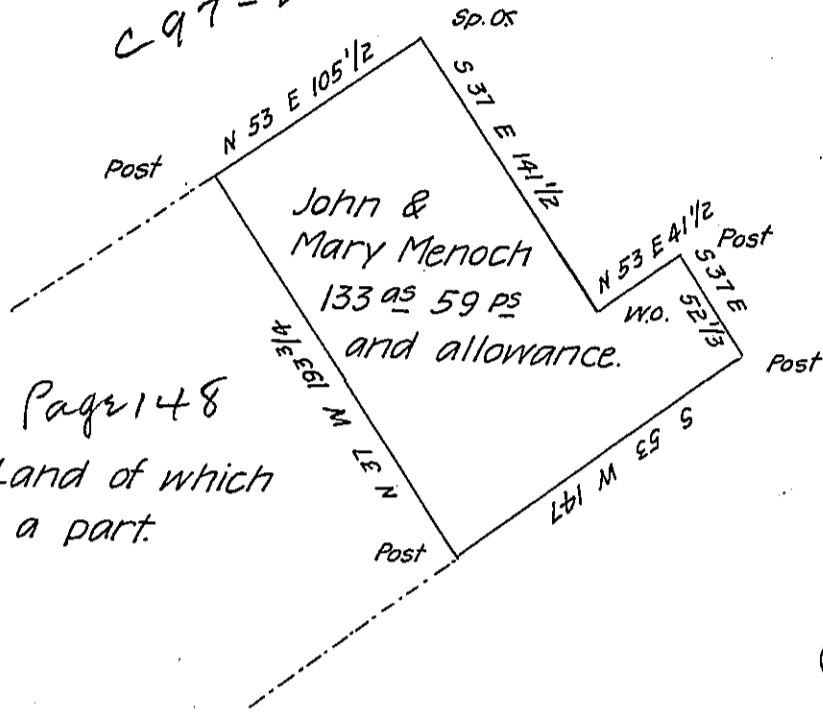


John Kains Land

C 97-226



Page 148  
Other Land of which  
this is a part.

The above described piece of land containing one hundred and thirty three acres and 59 perches and the allowance of Six P. Cent is part of a survey made for John and Mary Menoch on two warrants dated May 26<sup>th</sup> 1773 situate in Franklin Township in the County of Westmoreland the above described piece Surveyd December 16<sup>th</sup> 1807.

P- John Moore D.S.

Samuel Cochran Esq<sup>r</sup>

Surv<sup>r</sup> Gen<sup>l</sup> of Penna

The above described tract was surveyed on warrant to John Menoch dated 26<sup>th</sup> May 1773.

Andrew Porter S. G.

IN TESTIMONY that the above is a copy of the original remaining on file in the Department of Internal Affairs of Pennsylvania, made conformably to an Act of Assembly approved the 16th day of February, 1833, I have hereunto set my Hand and caused the Seal of said Department to be affixed at Harrisburg, this fourth day of May 1906.

*Isaac P. Brown*  
Secretary of Internal Affairs